

14.01.19 –

«

»

:

,

:

:

,

,

«

.

»

,

,

«

»

:

«

. . .

»

« »

2015 . 14:00

001.023.01

«

»

: 119991,

.

,

2, . 1

«

»

119991,

.

,

2, . 1

<http://nczd.ru>

« »

2015 .

... (... .., 2002,, 2012).

(... .., 2012, Segal F. et al., 2012).

(Gershman G., et al., 2012, Canto M.I. et al. 2014).

(Wallace M.B. et al., 2012, Chauhan S.S. et al. 2014).

(Leong R. et al., 2012).

()

:

.

:

1.

.

2.

,

.

3.

.

4.

,

5.

-

6.

.

.

:

,

,

.

,

.

,

.

,

() .

:

(Digestive Disease Week) 2012, 2013 2014 . (DDW
2012, - ; DDW 2013, ; DDW 2014,); VI
(6th Europaediatrics, , , 2013); XIV
(14th Congress of The European Paediatric Surgeons
Association, , , 2013), XIX
(, 2013) IV, V, VI, VII

Cellvizio (ICCU 2012, , ; ICCU 2013, , ; ICCU
2014, , , ICCU 2015, ,).

« »
« ».

10 , 5 -
1 -

114 , 5 ,
, 14 ,
20 , (8 92).

« » , - ,
2011 2014 .
(. . . - . . . , . . .) ,
(. . . - . . . , . . .) (. . . -
. . . , . . .) 116 , 78 , 38 3
18 (11,3 ± 4).

() .

() , .

Fujinon EPX4400
Fujinon EG450WR5 (Fujifilm Corp., ,).

G. Tytgat (Dixon M.F. et al., 2007), 1996),

24

()

3 6

« »

UHD. Cellvizio® (Mauna Kea Technologies,) Gastroflex Miami, (Wallace M.B. et al., 2011).

Liu,

(Liu J.J. et al. 2011):

- 1) , . . . 75%
- 2) 3.
- 3) .
- 4) 70%
- 5) .

3 10 .
 1000 ,
 (1).

1%.

17

10%

(Novartis, ,) 5

(5

15

)

(Datex Ohmeda ardiocap 5,).

« » (. - . . . , . . .).
10%

PAS-

(*Greenson J.K. et al., 2015*).

Marsh (*Marsh M.N. et al., 1995*).

(*Hewett D.G. et al, 2012*),

5 5 .

in situ

6

Microsoft Excel 2012 (Microsoft Corp.,)

SPSS 16.0 (SPSS,

) STATA (StataCorp LP, College Station,).

“ ” —

0,05

- 0,699 0,3, - 0,299 0. 1 0,7,

18 (11,3 ± 4) (116 , 78 , 38 3)

1.

	N	%	N	%	N	%
3-7	12	10,3	8	6,9	20	17,2
8-12	32	27,6	10	8,7	42	36,2
13-18	34	29,3	20	17,2	54	46,6
	78	67,2	38	32,8	116	100

28

, 62 , () , () ,

2 (.1).

(. 2).

11

11

7

, 3

(), 1 , 3

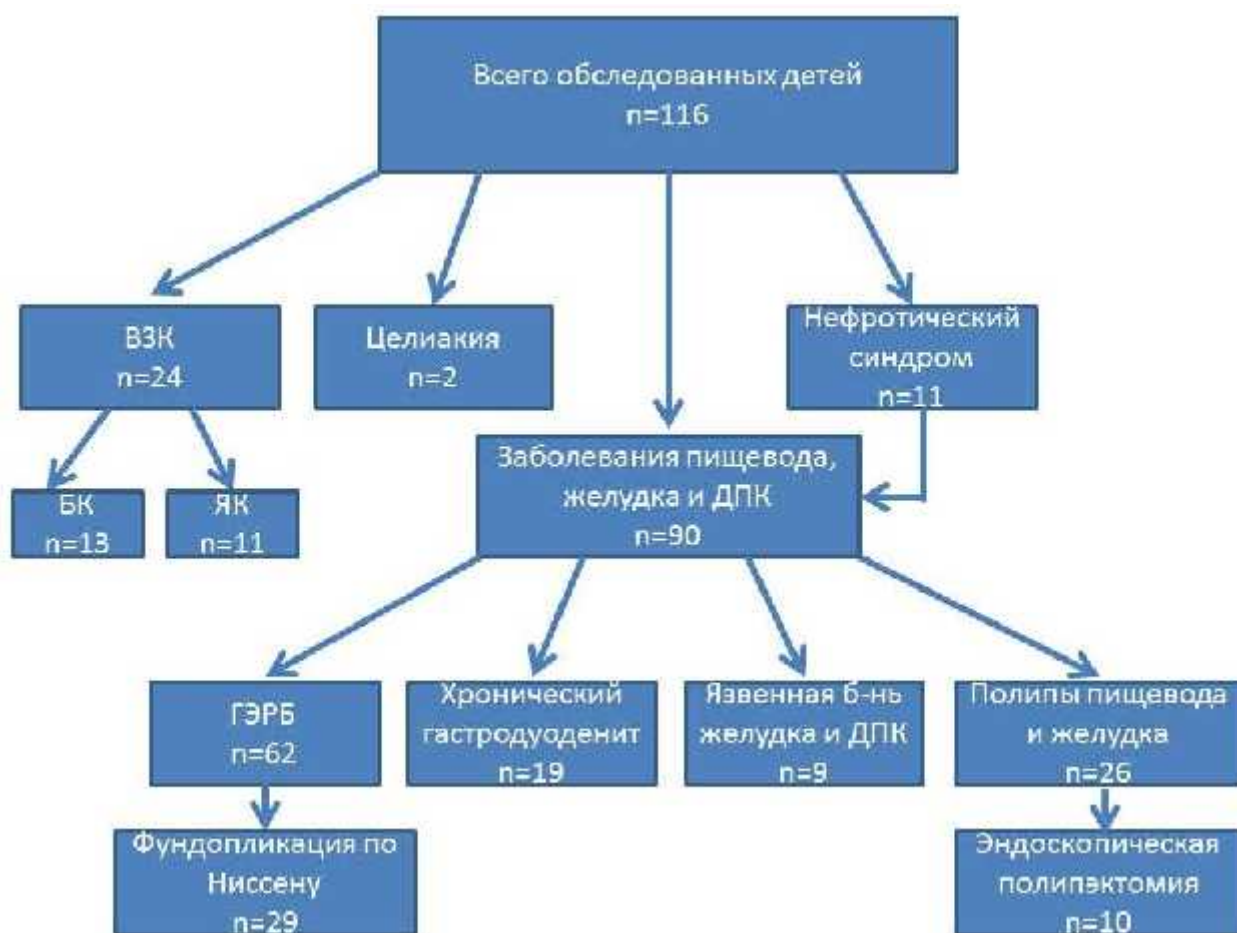


Рис. 1. Распределение обследованных детей по нозологическим формам заболевания.

2.

	32	29	1	62
(,)	24	-	-	24
	6	-	3	9
	12	-	7	19
	2	-	-	2
	76	29	11	116
	13	10	3	26

,

.

3.

I
 11 (9,4%) , II - 14 (12,1%), III - 6 (5,2%), IV - 16 (13,8%).
 69
 (59,4%).
 40
 (34,4%), - 7 (6,0%), - 17
 (14,6%).
 41 (35,3%) . 11 (9,7%) ()
 ,)
 .
 36 (31,0%),
 - 8 (6,9%), - 18 (15,4%).
 43 (37,0%) .

3. ,

	I	II	III	IV					
	11 (9,4%)	14 (12,1%)	6 (5,2%)	16 (13,8%)	-	-	69 (59,5%)	-	116 (100%)
	40 (34,4%)				7 (6,0%)	17 (14,6%)	41 (35,3%)	11 (9,7%)	116 (100%)
	36 (31,0%)				8 (6,9%)	18 (15,4%)	43 (37,0%)	11 (9,7%)	116 (100%)

- , -

, .

4.

116

: - 23 (19,8%), -

44 (37,9%).

9 (7,7%),

49 (42,3%) . (8,6%)

() ,

66 (56,9 %).

40 (34,5%).

74

(63,8%), - 32 (27,6%).

4.

,

	67 (57,8%)	66 (56,9%)	74 (63,8%)
	49 (42,2%)	40 (34,5%)	32 (27,65)
	-	10 (8,6%)	10 (8,6%)
	116 (100%)	116 (100%)	116 (100%)

26 (22,4%),

5 10 (8,6%), 5

- 16 (13,7%)

21 (80,7%)

5 (19,3%)

“ ”

17 (14,6%)

9 (7,7%) -

16 (13,7%) - 10 (8,6%)

5

5.

	< 5	> 5			
	10 (8,6%)*	16 (13,7%)	-	-	26
	-	-	17 (14,6%)	9 (7,7%)	26
	-	-	16 (13,7%)	10 (8,6%)	26

*%

(52,5%), 55 (47,5%), 61
 , 2 (1,7%),
 () 15 (12,8%)
 .

(57,0%), 35 (30,2%), - 66
 - 2 (1,7%).

33 (28,5%), - 68 (58,6%),
 - 2 (1,7%).

6.

	55 (47,5%)	66 (57,0%)	68 (58,6%)
	61 (52,5%)	35 (30,2%)	33 (28,5%)
	-	15 (12,9%)	15 (12,9%)
	116 (100%)	116 (100%)	116 (100%)
	2 (1,7%)	2 (1,7%)	2 (1,7%)

(7).

7.

						<i>R_s</i> (p)
	88,8%	88,3%	86,4%	90,4%	88,6%	0,79 (=0,001)
	92,3%	95,3%	100%	95,3%	94,2%	0,85 (=0,001)
	92,4%	95,2%	-	-	-	0,95 (=0,001)
	83,7%	87,5%	93,9%	70,0%	84,9%	0,67 (=0,001)
	86,7%	81,8%	90,7%	75,0%	85,1%	0,67 (p=0,001)

- , Rs - , -

41 , 24 (58,5%)

17

24 - 13 11 : 13
 (54%) 11 (46%) 10 18 ()
 14,0±3,3). 4 33 (13±8,2)
 2,9±1,8 .

9 (38%)

13 (9, 4)

24

(n=19)

24

J.J. Liu,

(p=0,01).

100%

3

(p=0,32),

(p=0,60) (. 2).

(. 3).

1000

1%,

6 (25%)

1%,

6

1%

6

(. 2).

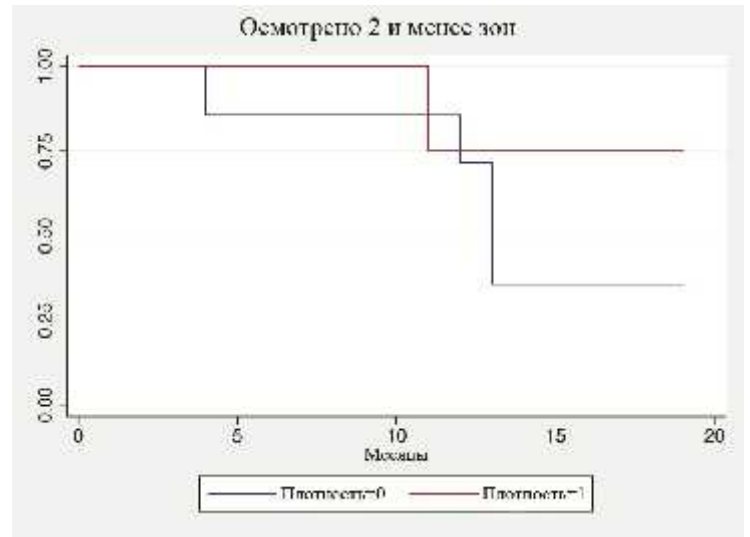
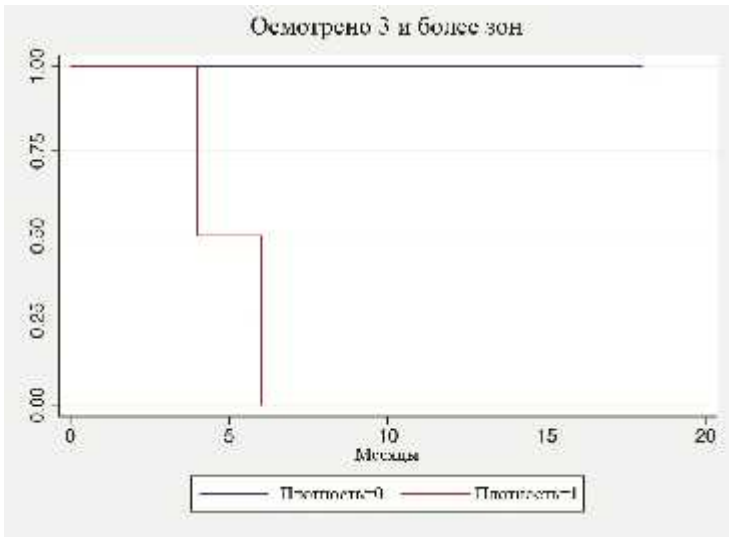
5,6±1,7

1000

1,7±0,5

1000

0,42 (=0,15).



.2.

3

J.J. Liu

() 100%
6 ,
()

.3.

2

in vivo

29

3 18 ($11,6 \pm 3,6$

).

6

8.

(8).

“ ”

0,94,

(=0,001).

8.

	0 (0%)	20 (68,9%)
I	10 (34,5%)	5 (17,2%)
II	7 (24,1%)	0 (0%)
III	4 (13,7%)	0 (0%)
IV	8 (27,5%)	4 (13,7%)
	0 (0%)	18 (65,5%)
	25 (86,2%)	7 (20,0%)
	2 (6,8%)	2 (6,8%)
	2 (6,8%)	2 (6,8%)
	7 (24,1%)	3 (10,3%)
	2 (6,8%)	0 (0%)
	0 (0%)	17 (58,6%)
	25 (86,2%)	8 (27,5%)
	2 (6,8%)	2 (6,8%)
	2 (6,8%)	2 (6,8%)
	7 (24,1%)	3(10,3%)
	2 (6,8%)	0 (0%)

1.

(“ ”,

), ,

13,9 %

2.

()

“ ”

,

19,8%

(18,8%).

3.

,

,

;

,

—

;

,

,

,

-

4.

.

5.

,

,

.

,

6.

.

,

7.

.

,

8.

,

.

9.

,

.

10.

.

,

,

,

6

11.

.

1.

2.

:

,

,

;

,

;

,

,

,

.

3.

.

,

,

4.

.

,

,

5.

.

.

1. Shavrov A.A.(Sr.), Kirgizov I.V., Shavrov A.A., Kharitonova A.Y., Talalaev A.G., Volynets G.V. *Bangladesh journal of endosurgery* – 2012. – 4, 3 - 17-21.
2. Shavrov A.A.(Sr.), Kirgizov I.V., Shavrov A.A., Kharitonova A.Y., Talalaev A.G., Volynets G.V. *Bangladesh journal of endosurgery* – 2013 – vol. 1, issue 2. p. 1-6.
3. Shavrov A.A.(Sr.), Kirgizov I.V., Shavrov A.A., Kharitonova A.Y., Talalaev A.G., Volynets G.V. *Bangladesh journal of endosurgery* – 2013. – 4, 3 - 10-15.
4. Shavrov A.(Sr.), Kirgizov I., Volynets G., Kharitonova A., Shavrov A., Talalaev A. Probe-based Confocal Laser Endomicroscopy in diagnosis of gastroesophageal reflux disease complications in pediatrics. Abstracts from 14th Congress of EUPSA, Leipzig, Germany - 2013- p. 211.
5. Shavrov A. (Sr.), Kirgizov I., Volynets G., Kharitonova A., Shavrov A., Talalaev A., Venediktova M., Gusev A. Probe-based Confocal Laser Endomicroscopy in diagnosis of inflammatory bowel disease in pediatrics. Abstracts from 6th Europaediatrics, Glasgow, UK - 2013- p. 67.
6. Shavrov A., Kharitonova A., Shavrov A.(Sr.), Talalaev A. Probe-based confocal laser endomicroscopy in diagnosis of esophagus disease of children. Abstracts from Digestive Disease Week, Orlando, USA.- 2013- p. 258.
7. Shavrov A.A.(Sr.), Kirgizov I.V., Shavrov A.A., Kharitonova A.Y., Talalaev A.G., Volynets G.V. *Bangladesh journal of endosurgery* – 2013. – 4, 3 - 56-58.
8. Shavrov A.A.(Sr.), Kirgizov I.V., Shavrov A.A., Kharitonova A.Y., Talalaev A.G., Volynets G.V. *Bangladesh journal of endosurgery* – 2014. – 2, 16-19.
9. Shavrov A. (Sr.), Kharitonova A., Claggett B., Shavrov A., Liu J. The Predictive Value of Probe-Based Confocal Laser Endomicroscopy (pCLE) Findings in Pediatric Inflammatory Bowel Disease Patients. *Gastroenterology* – 2014- Vol. 146, Issue 5 p. 214
10. Shavrov A.A.(Sr.), Kirgizov I.V., Shavrov A.A., Kharitonova A.Y., Talalaev A.G., Volynets G.V. *Bangladesh journal of endosurgery* – 2014. – 11-12. 60-66.